



Hardy Filtration

Integrated filtration solutions: air, water & oil



Rigid Extended Surface Filters

ASHRAE-CELL

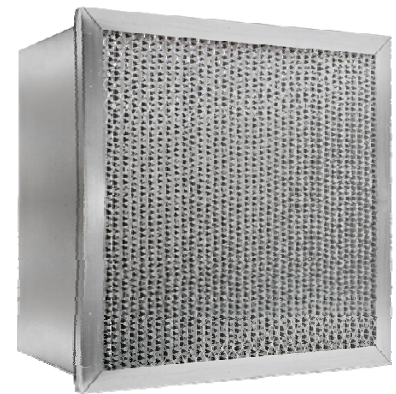
Characteristics

The ASHRAE-CELL filter provides high efficiency filtration where a clean air environment is a necessity. This includes Hospitals, Laboratories, Office Buildings, Food and Beverage Processing Plants, etc.

Filter performance is not significantly affected by changing air velocity or repeated fan shutdown, making it the ideal filter choice for variable volume systems. The ASHRAE Cell makes upgrading of an existing filtration system simple.

The ASHRAE-CELL can be easily installed where lower efficiency filters no longer meet your filtration needs.

The ASHRAE-CELL is available in three efficiency ranges: ASHRAE test standard 52.1-1992; 95%, 85% and 65%, ASHRAE test standard 52.2; MERV 14, 13 and 11.



Construction

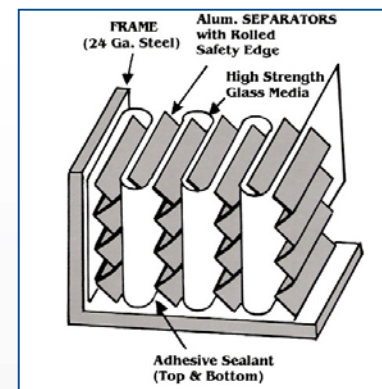
Each ASHRAE-CELL filter is constructed of high strength water resistant glass micro-fiber paper in a pleated design. A corrugated aluminum separator is placed between each pleat of media to prevent the pleats from touching.

This allows free flow of air into and through the filter. The separators also add rigidity to the construction

The front and rear edges of the separators are rolled over to eliminate sharp edges that could damage the media during shipping and handling.

The media pack is installed into a heavy 24 ga. galvanized steel enclosure frame. A sealant is then applied to provide a positive seal between the media and the frame. Optional face guards are available on the air entering or air leaving sides of the filter upon request.

The ASHRAE-CELL is classified by Underwriters Laboratories as UL Class 1.



Performance

CAPACITIES AND DIMENSIONS

Efficiency	Nominal	Part No.		Exact Dimensions			Capacity	Initial	Final	Surface
	Dimensions	Single Header	Without Header	W	L	D	CFM	Resistance In.Wg.	Resistance In.Wg.	Area Sq. Ft.
60-65% MERV 11	12 X 24 X 6	CEL6M-246SH	CEL6M-246	11.375"	23.375"	5.5"	500	0,2	1.2"	22
	20 X 20 X 6	CEL6M-006SH	CEL6M-006	19.375"	19.375"	5.5"	700	0,2	1.2"	33
	20 X 24 X 6	CEL6M-046SH	CEL6M-046	19.375"	23.375"	5.5"	830	0,2	1.2"	41
	20 X 25 X 6	CEL6M-056SH	CEL6M-056	19.375"	24.375"	5.5"	870	0,2	1.2"	43
	24 X 24 X 6	CEL6M-446SH	CEL6M-446	23.375"	23.375"	5.5"	1000	0,2	1.2"	50
	12 X 24 X 12	CEL6M-2412SH	CEL6M-2412	11.375"	23.375"	11.5"	1000	0,65	1.2"	47
	20 X 20 X 12	CEL6M-0012SH	CEL6M-0012	19.375"	19.375"	11.5"	1400	0,65	1.2"	70
	20 X 24 X 12	CEL6M-0412SH	CEL6M-0412	19.375"	23.375"	11.5"	1650	0,65	1.2"	86
	20 X 25 X 12	CEL6M-0512SH	CEL6M-0512	19.375"	24.375"	11.5"	1750	0,65	1.2"	90
	24 X 24 X 12	CEL6M-4412SH	CEL6M-4412	23.375"	23.375"	11.5"	2000	0,65	1.2"	105
80-85% MERV 13	12 X 24 X 6	CEL8M-246SH	CEL8M-246	11.375"	23.375"	5.5"	500	0,35	1.2"	22
	20 X 20 X 6	CEL8M-006SH	CEL8M-006	19.375"	19.375"	5.5"	700	0,35	1.2"	33
	20 X 24 X 6	CEL8M-046SH	CEL8M-046	19.375"	23.375"	5.5"	830	0,35	1.2"	41
	20 X 25 X 6	CEL8M-056SH	CEL8M-056	19.375"	24.375"	5.5"	870	0,35	1.2"	43
	24 X 24 X 6	CEL8M-446SH	CEL8M-446	23.375"	23.375"	5.5"	1000	0,35	1.2"	50
	12 X 24 X 12	CEL8M-2412SH	CEL8M-2412	11.375"	23.375"	11.5"	1000	0,55	1.2"	47
	20 X 20 X 12	CEL8M-0012SH	CEL8M-0012	19.375"	19.375"	11.5"	1400	0,55	1.2"	70
	20 X 24 X 12	CEL8M-0412SH	CEL8M-0412	19.375"	23.375"	11.5"	1650	0,55	1.2"	86
	20 X 25 X 12	CEL8M-0512SH	CEL8M-0512	19.375"	24.375"	11.5"	1750	0,55	1.2"	90
	24 X 24 X 12	CEL8M-4412SH	CEL8M-4412	23.375"	23.375"	11.5"	2000	0,55	1.2"	105
90-95% MERV 14	12 X 24 X 6	CEL9M-246SH	CEL9M-246	11.375"	23.375"	5.5"	500	0,4	1.2"	22
	20 X 20 X 6	CEL9M-006SH	CEL9M-006	19.375"	19.375"	5.5"	700	0,4	1.2"	33
	20 X 24 X 6	CEL9M-046SH	CEL9M-046	19.375"	23.375"	5.5"	830	0,4	1.2"	41
	20 X 25 X 6	CEL9M-056SH	CEL9M-056	19.375"	24.375"	5.5"	870	0,4	1.2"	43
	24 X 24 X 6	CEL9M-446SH	CEL9M-446	23.375"	23.375"	5.5"	1000	0,4	1.2"	50
	12 X 24 X 12	CEL9M-2412SH	CEL9M-2412	11.375"	23.375"	11.5"	1000	0,65	1.2"	47
	20 X 20 X 12	CEL9M-0012SH	CEL9M-0012	19.375"	19.375"	11.5"	1400	0,65	1.2"	70
	20 X 24 X 12	CEL9M-0412SH	CEL9M-0412	19.375"	23.375"	11.5"	1650	0,65	1.2"	86
	20 X 25 X 12	CEL9M-0512SH	CEL9M-0512	19.375"	24.375"	11.5"	1750	0,65	1.2"	90
	24 X 24 X 12	CEL9M-4412SH	CEL9M-4412	23.375"	23.375"	11.5"	2000	0,65	1.2"	105

Other sizes available, please contact the sales office.

Available with 13/16" or 1-1/8" header

Flammability: UL Class 1

APPLICATIONS

When a higher level of efficiency is required.

Variable air volume systems.

Space restrictions.

Commercial buildings.

Hospitals.

Laboratories.